

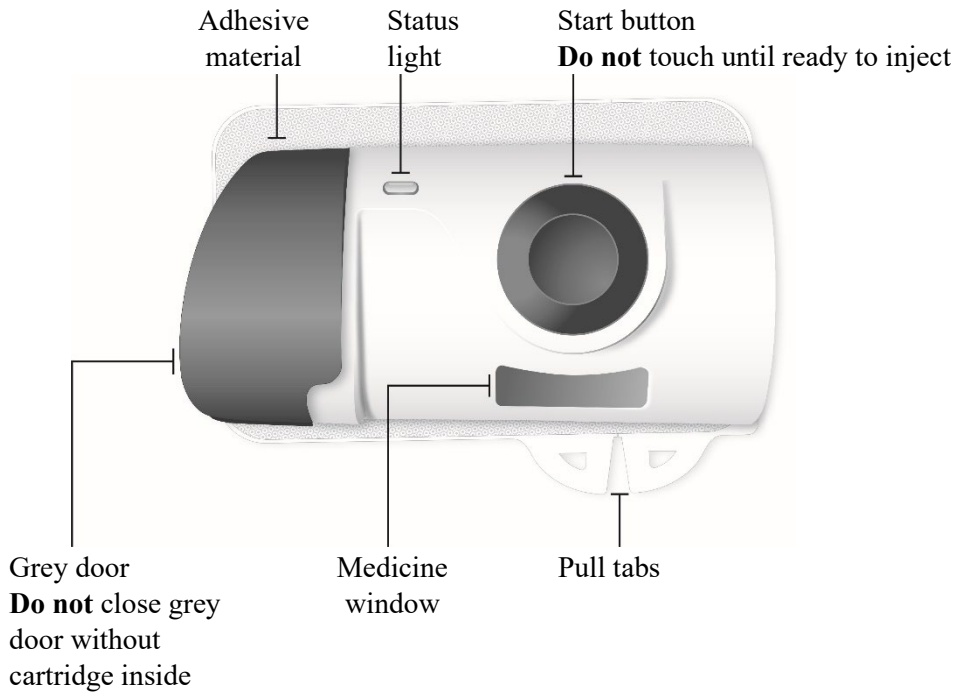
Instructions for Use

SKYRIZI® 180 mg/ 1.2 mL or 360 mg/ 2.4 mL Pre-filled Cartridge with On-Body Injector

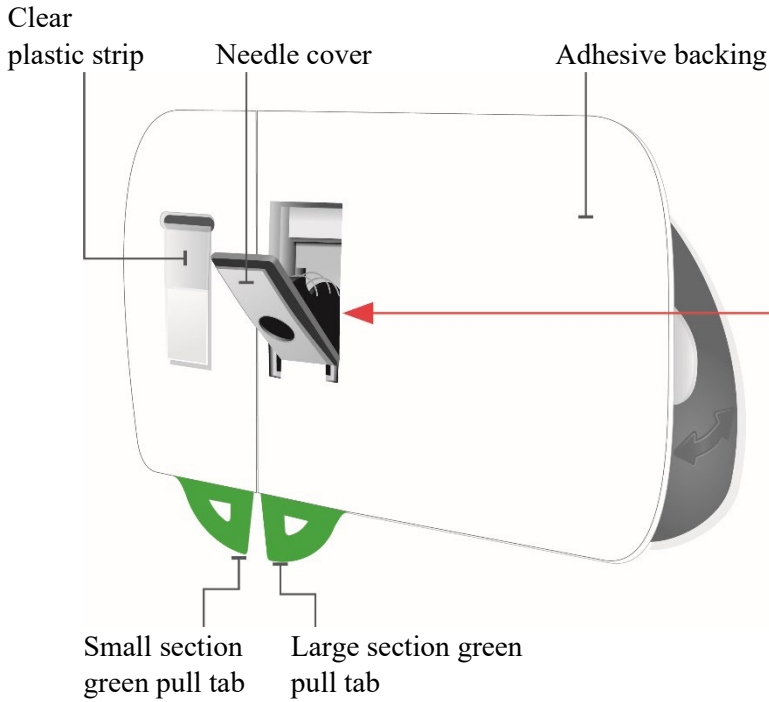
Please read complete instructions before using SKYRIZI.

SKYRIZI on-body injector

Front view



Back view



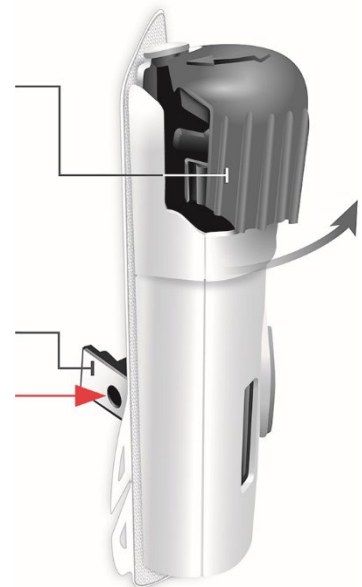
Take care. Needle inside
(under needle cover)
Do not touch the needle cover area or needle

Side view

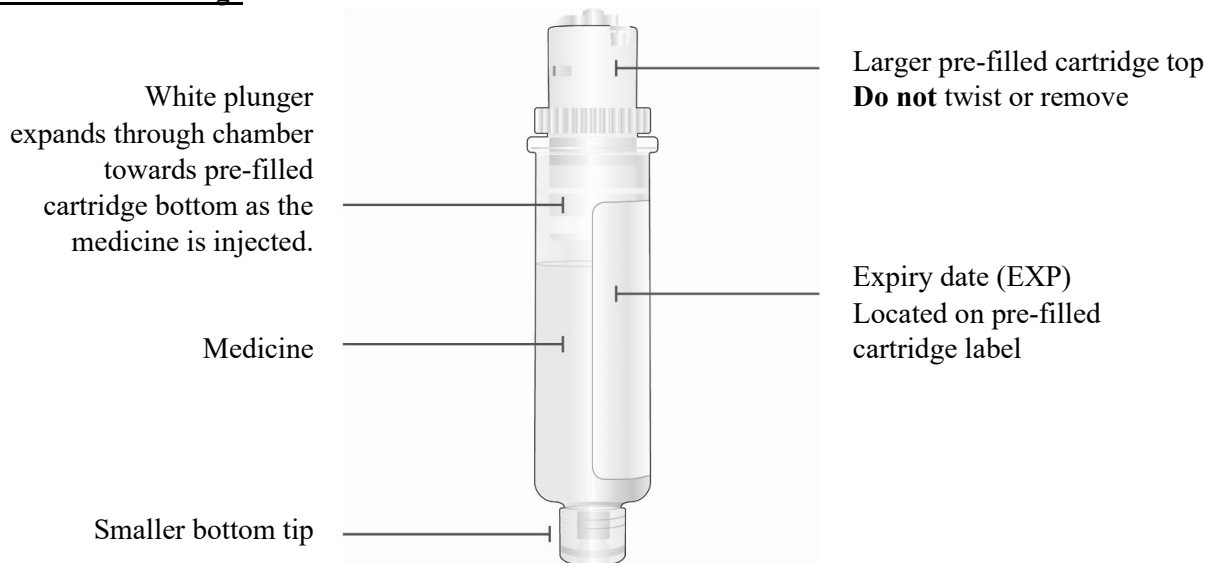
Door latch
Opening side has ridges

Grey door should be slightly open.
Do not close grey door without prefilled cartridge inside

Needle inside
(under needle cover)
Do not touch the needle cover area or needle.



Pre-filled Cartridge



Important information to know before you inject Skyrizi

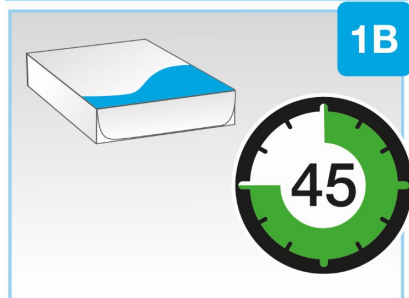
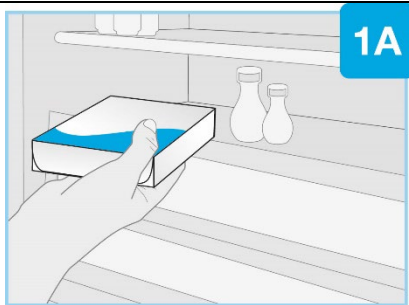
- You should receive training on how to inject Skyrizi before giving an injection. Talk to your doctor, pharmacist or nurse if you need help.
- Mark the dates on your calendar so you know when to inject Skyrizi.
- The single use on-body injector is designed for use with Skyrizi cartridge only.
- Keep Skyrizi in the original carton to protect the medicine from light until it is time to use it
- Take the carton out of the refrigerator and leave it at room temperature, out of direct sunlight, for **at least 45 up to 90 minutes** before injecting.
 - The on-body injector will not work if Skyrizi is not left at room temperature to warm for at least 45 minutes.
- **Do not** let the on-body injector get wet with water or any other liquids.
- **Do not** touch the start button until you place the on-body injector loaded with the cartridge onto your skin and are ready to inject.
 - You can only press the start button **one** time.
- Physical activity should be limited during the injection process. Moderate physical activities can be done, such as walking, reaching and bending.
- **Do not** delay in injecting the medicine after loading the cleaned cartridge into the on-body injector. Waiting will dry out the medicine and the on-body injector will not work afterwards.
- **Do not** inject if the liquid in the inspection window is cloudy or contains flakes or large particles. The liquid should look clear to yellow and may contain tiny white or clear particles.
- **Do not** shake the carton, pre-filled cartridge or on-body injector.

Return this medicine to the pharmacy

- if the expiry date (EXP) has passed.
- if the liquid has ever been frozen (even if thawed).
- if the cartridge or on-body injector has been dropped or damaged.
- if the carton perforations are broken.
- if the white paper tray cover is broken or missing.

Follow the steps below each time you use Skyrizi

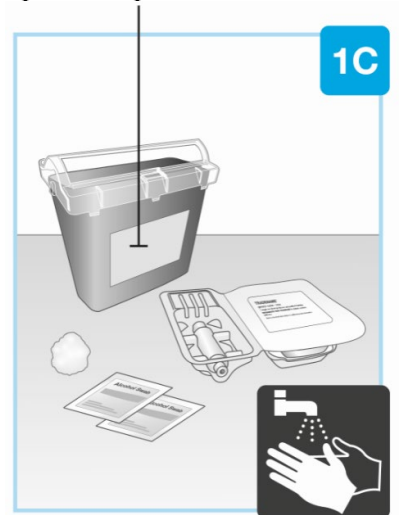
STEP 1 - Get ready



Take the carton out of the refrigerator and leave it at room temperature, out of direct sunlight, for **at least 45 up to 90 minutes** before injecting.

- The on-body injector will not work if Skyrizi is not left at room temperature to warm for at least 45 minutes.
- Check expiry date (EXP) on the carton. Do not use Skyrizi if the expiry date (EXP) has passed.
- **Do not** remove the cartridge or on-body injector from the carton while allowing Skyrizi to reach room temperature.
- **Do not** warm Skyrizi in any other way. For example, **do not** warm it in a microwave or in hot water.

Special disposal container

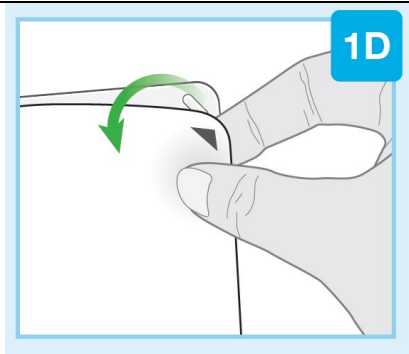


Gather all supplies and wash your hands

Place the following items on a clean, flat surface.

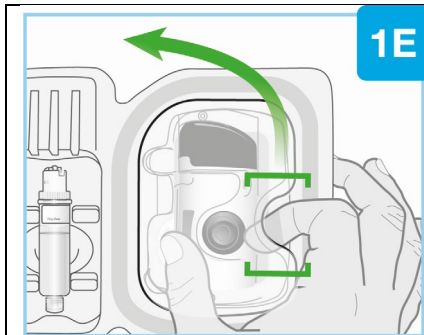
- plastic tray containing 1 on-body injector and 1 pre-filled cartridge.
- 2 alcohol pads (not included in the carton).
- 1 cotton ball or gauze pad (not included in the carton).
- special disposal container (not included in the carton).

Wash and dry your hands.



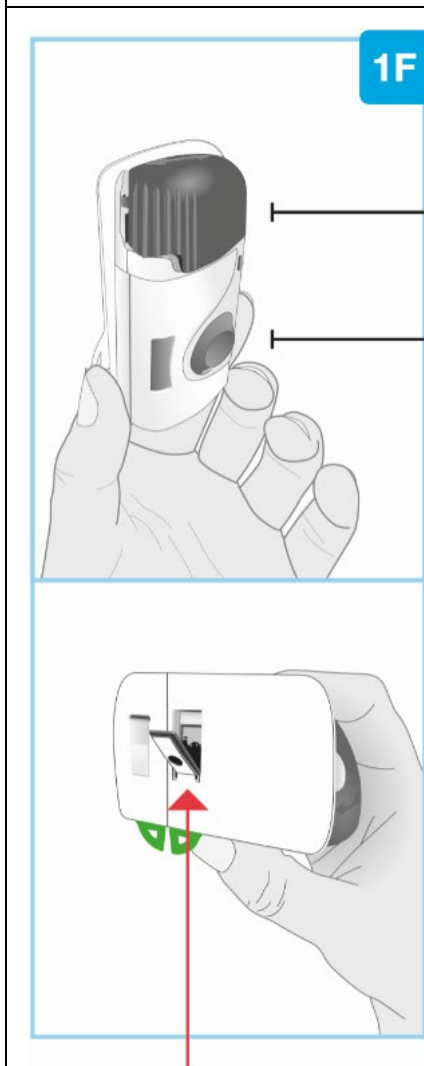
Remove the white paper tray seal

- Locate the black arrow.
- Peel away the white paper tray seal from the plastic tray.



Lift the plastic cover

- Locate the rounded opening on the top cover.
- Insert your index finger in the opening and place your thumb on the opposite side.
- Lift the cover to remove and set it aside.
- **Do not** touch the grey start button until it is time to inject. It can only be pressed **one** time.



Inspect the on-body injector

- Check that the on-body injector is intact and not damaged.
- The grey door should be slightly open.
- If the grey door does not open, press in firmly on the grey door ridges (left side of door) and swing open the door.
- **Do not** close the grey door before the pre-filled cartridge is loaded.
- **Do not** use on-body injector if you drop it, discover missing pieces, or if it's damaged.
- **Do not** touch the grey start button until it is time to inject. It can be pressed **one** time only.
- **Do not** touch the needle cover area or needle.

If the grey start button is pressed before placing it on your body, the on-body injector can no longer be used. If this happens, speak to your doctor, pharmacist or nurse.

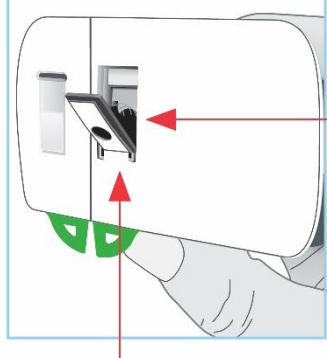
Proceed to the next step.

Needle inside
(under needle cover)

STEP 2 - Set up on-body injector



Back view



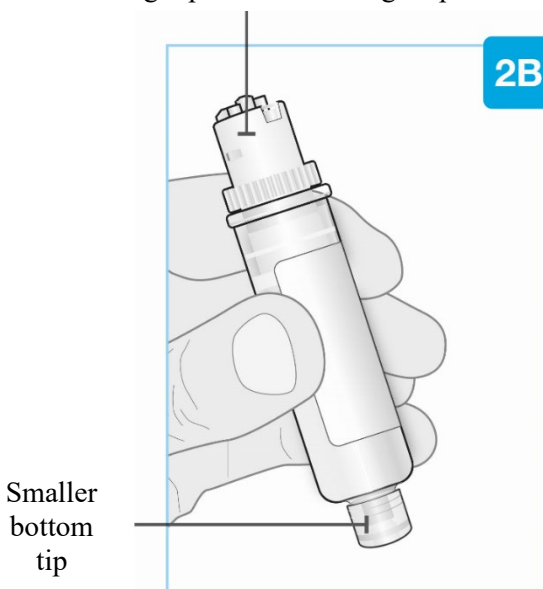
Needle cover

Fully open the grey door

- Avoid touching the needle cover area on the back of the on-body injector. The needle is behind the needle cover.
- Swing the grey door all the way to the right to open it.
- If the grey door does not open, press in firmly on the grey door ridges (left side of door) and swing open the door.
- **Do not** close the grey door before the cartridge is loaded
- **Do not** touch the grey start button until it is time to inject. It can only be pressed **one** time

Put the on-body injector aside.

Larger pre-filled cartridge top



Smaller bottom tip

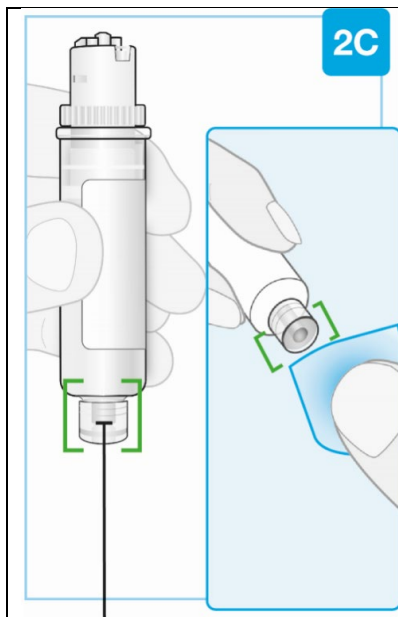
Inspect the pre-filled cartridge

- **Do not** twist or remove cartridge top.

Carefully remove the cartridge from the plastic tray.

Check the pre-filled cartridge

- The liquid should look clear to yellow and may contain tiny white or clear particles. It is normal to see one or more bubbles.
- **Do not** use if the liquid is cloudy, discoloured, or contains flakes or large particles.
- The pre-filled cartridge parts and the clear plastic are not cracked or broken.
- **Do not** use if the liquid has been frozen (even if thawed).
- **Do not** use the pre-filled cartridge if you drop it, discover missing pieces, or it is damaged.



Smaller bottom tip

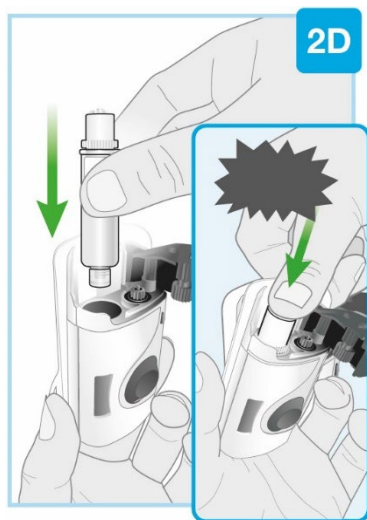
Clean centre
of smaller
bottom tip

Clean the smaller bottom tip of the pre-filled cartridge

Locate the smaller bottom tip of the pre-filled cartridge.

- Clean smaller bottom tip of the pre-filled cartridge with an alcohol pad. Make sure to use the alcohol pad to clean the centre of the smaller bottom tip of the pre-filled cartridge.
- **Do not** touch the smaller bottom tip of the pre-filled cartridge after cleaning.

Insert straight

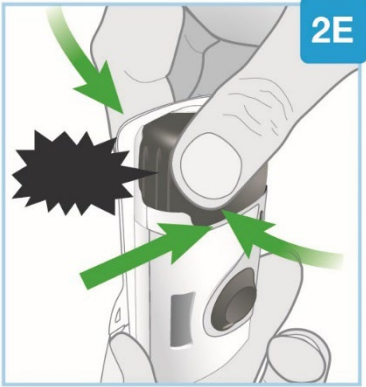


'click'

Load the cleaned pre-filled cartridge into the on-body injector

- **Do not** twist or remove the pre-filled cartridge top.
- **Do not** touch the grey start button until it is time to inject. It can only be pressed **one** time.
- Insert the smaller bottom tip of the pre-filled cartridge into the on-body injector first.
- Firmly push down on the pre-filled cartridge top until you hear a "click" and it is fully inserted.
- After loading the pre-filled cartridge, you may see a few drops of medicine on the back of the on-body injector. This is normal.

Make sure to proceed to the next step without delay after inserting the pre-filled cartridge. Waiting will dry out the medicine and the on-body injector will not work afterwards.



'snap'

No Gaps

2E

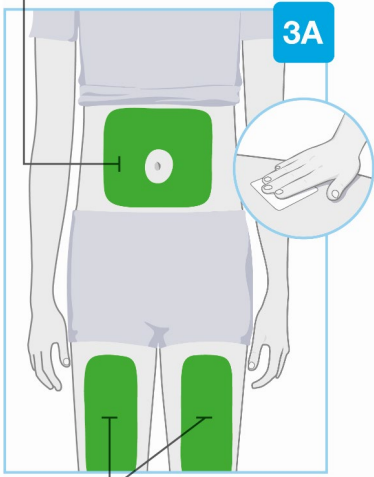
Confirm pre-filled cartridge is inserted and close the grey door

- Confirm the pre-filled cartridge is fully inserted.
- **Do not** close the grey door if the pre-filled cartridge is not fully inserted or is missing.
- Swing the grey door to the left, then squeeze firmly and listen for the grey door to "snap" shut. No gaps should exist between the grey door and the on-body injector.
- The grey door should stay locked after loading the pre-filled cartridge.

Do not touch the grey start button until it is time to inject. It can only be pressed **one** time.

Proceed without delay to the next step.

STEP 3 - Prepare to inject



Areas to inject

3A

Areas to inject

Choose and clean your injection site
Choose from these 3 areas to inject:

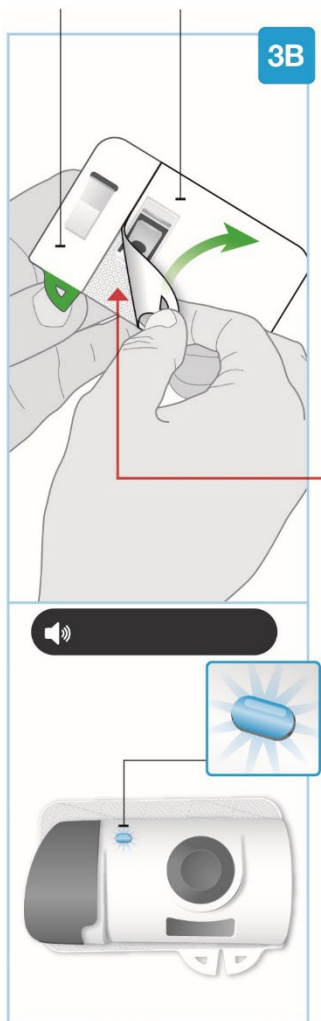
- front of left thigh
- front of right thigh
- your belly (abdomen) at least 5 cm from your belly button (navel)

Do not inject into areas of the skin that naturally fold or bulge because the on-body injector could fall off during wear.

Before the injection, wipe where you will inject in a circular motion with an alcohol pad.

- **Do not** touch or blow on the injection site after it is cleaned. Allow the skin to dry before placing the on-body injector on the skin
- **Do not** inject through clothes
- **Do not** inject into skin that is sore, bruised, red, hard, scarred, or has stretch marks, moles or excessive hair. You can trim the excessive hair from the injection site

Small section Large section



Needle inside
(under needle
cover)

‘beep-beep-
beep’

**Activated
injector**
Status light
flashing blue

Peel both tabs to expose skin adhesive

Turn the on-body injector over to find both green pull tabs

- Avoid touching the needle cover (needle inside).

Peel away the large section using the green pull tab to expose the skin adhesive.

Peel away the small section using the green pull tab to expose the skin adhesive. This will remove the clear plastic strip, activating the on-body injector.

- Check the status light when the on-body injector beeps.
- The status light will flash blue when the on-body injector is activated.
- If the status light does not flash blue, speak to your doctor, pharmacist or nurse.
- **Do not** press the grey start button yet.
- **Do not** touch the needle cover or the needle.
- **Do not** pull the adhesive material off on-body injector or allow the sticky side to fold and stick to itself.

The Skyrizi on-body injector must be placed on the skin and injection must be started within 30 minutes after removing the green pull tabs or it will not work. Make sure to proceed to next step without delay.

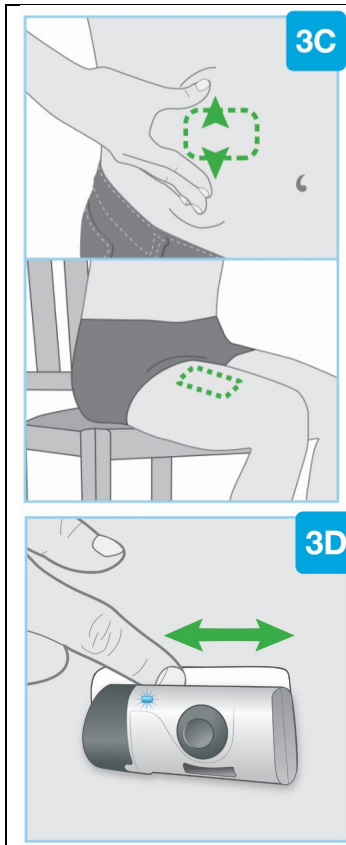


‘beep-beep-beep-beep-beep’

If the status light flashes red and beeps, the on-body injector is not working properly. Do not continue to use it.

Speak to your doctor, pharmacist or nurse for assistance.

If the on-body injector is attached to your body, carefully remove it from your skin.



Prepare the on-body injector for placement

- For the belly (abdomen), move and hold the skin to create a firm, flat surface for injection at least 5 cm from your belly button (navel). Make sure to sit up straight to avoid skin folds and bulges.
- You do not need to pull the skin flat for the front of left thigh or right thigh.

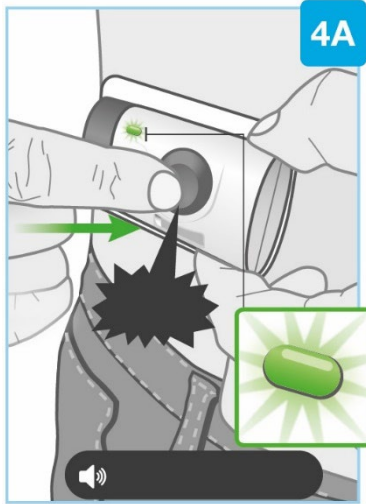
Make sure to place the on-body injector so that you can see the blue status light.

Place the on-body injector on your skin

- When the blue light flashes, the on-body injector is ready. Place the on-body injector onto the cleaned skin with the status light visible.
- **Do not** place the on-body injector on clothes. Only place on bare skin.
- Run your finger around the adhesive material to secure it.
- **Do not** move or adjust the on-body injector after it has been placed on your skin.

Proceed without delay to the next step.

STEP 4 - Inject Skyrizi



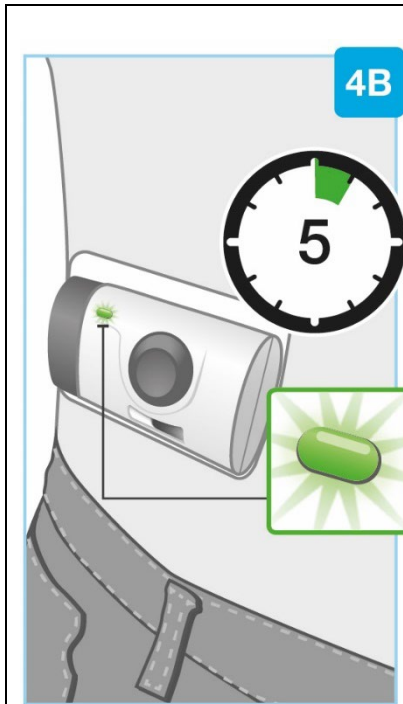
‘click’

‘beep-beep-beep’

Start injection

- **Do not** touch the grey start button until you place the on-body injector loaded with the cartridge onto your skin and are ready to inject. You can only press the start button **one** time.
- Firmly press the grey start button until you hear a "click". Then release the grey start button.
- You may feel a needle pinch.
- Check the status light when the on-body injector beeps.
- After starting the injection, the status light will continuously flash green.
- After starting the injection, you will hear pumping sounds as the on-body injector delivers the medicine.

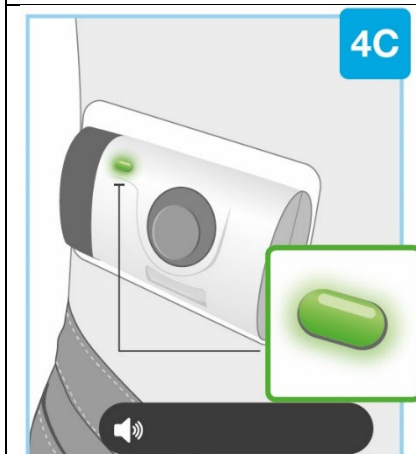
Do not continue to use the on-body injector if status light flashes red and beeps. Carefully remove from skin if the status light flashes red. If this happens, speak to your doctor, pharmacist or nurse.



Wait for the injection to finish

- It may take up to 5 minutes to complete the full dose of medicine. The on-body injector will automatically stop when the injection is finished.
- During the injection, the status light will continue to flash green.
- During the injection, you will hear pumping sounds as the on-body injector continues delivering the medicine.
- During the injection, moderate physical activities can be done, such as walking, reaching and bending.

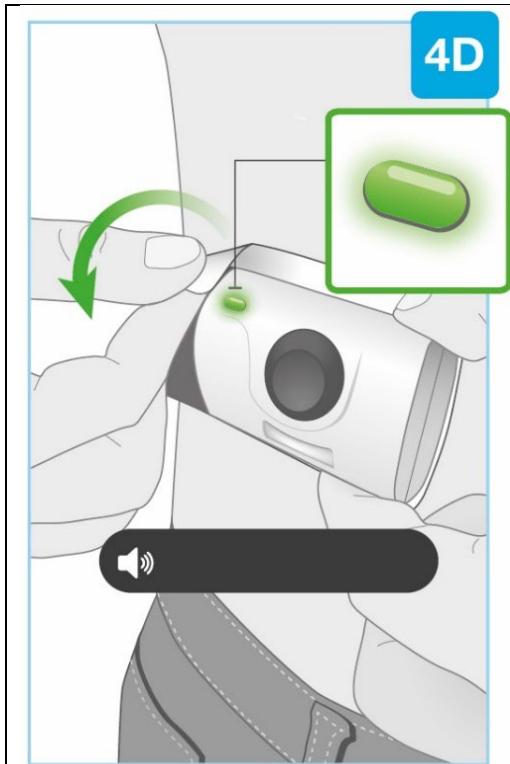
Do not continue to use the on-body injector if the status light flashes red and beeps. Carefully remove it from the skin if the status light flashes red. If this happens, speak to your doctor, pharmacist or nurse.



'beep-beep-beep'

Injection is complete when

- The on-body injector stops on its own.
- You hear a beep and the status light changes to solid green. If the status light has changed to solid green, this means that the injection is complete.



4D

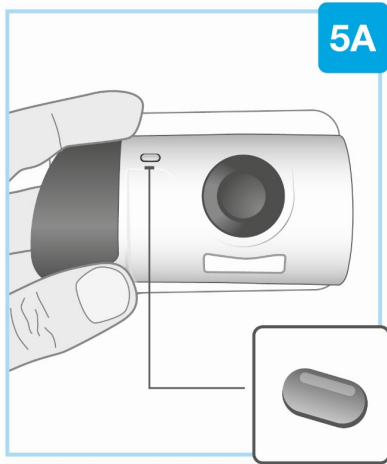
'beep-beep-beep'

Remove the on-body injector

- **Do not** remove the on-body injector if the status light is still flashing green and the injection is not finished.
- **Do not** put your fingers on the back side of the on-body injector when removing it from your skin.
- When the injection is done, grab the corner of the adhesive to carefully peel the on-body injector from the skin.
- Avoid touching the needle cover or needle on the back of the on-body injector.
- After removing the on-body injector, you will hear several beeps and the status light will turn off.
- The needle cover will cover the needle when the on-body injector is removed from the skin.
- It is normal to see a few small drops of liquid on your skin after removing the on-body injector.
- Press a cotton ball or gauze pad over the injection site on your skin and hold for 10 seconds.
- **Do not** rub the injection site.
- Slight bleeding at the injection site is normal.

Proceed to the next step.

STEP 5 - Finish



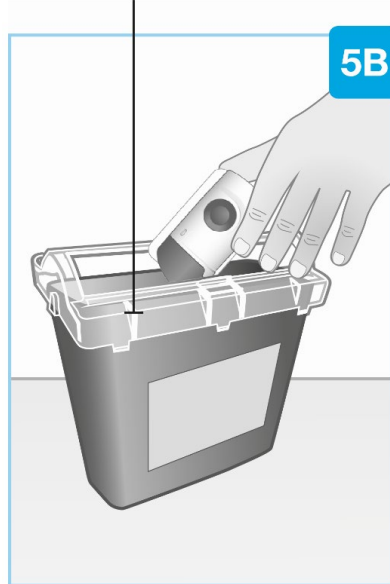
Check the on-body injector

Inspect the medicine window and status light.

Check to see that the white plunger fills the entire medicine window and the solid green light turns off, letting you know that all the medicine has been injected.

- If the white plunger does not fill the window, speak to your doctor, pharmacist or nurse.

Special disposal container



Disposal

Throw away the used on-body injector in a special disposal container straight after use.

- The on-body injector contains batteries, electronics, and a needle.
- Leave the cartridge in the on-body injector.
- **Do not** throw away the used on-body injector in the household waste.
- Your doctor, pharmacist or nurse will tell you how to return the full special disposal container. There may be local guidelines for disposal.

Additional information

- On-body injector operating temperature range is 18°C to 28°C and relative humidity range 25% to 75%.
- Altitude range is minus 400 meters to 3200 meters.

Version 3
03 March 2026