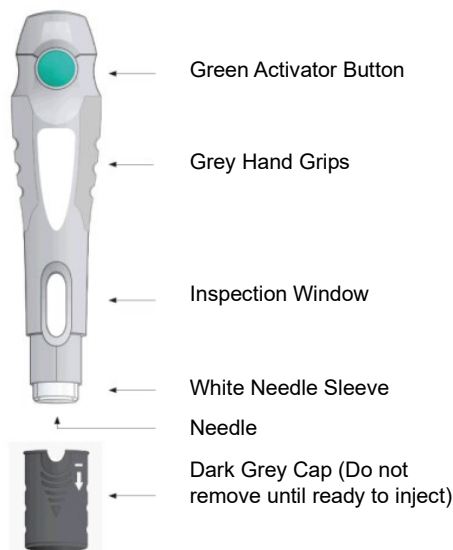


# Instructions for Use

## **SKYRIZI® Pre-filled Pen 150 mg/mL**

Please read complete instructions before using SKYRIZI.



### **Important information to know before you inject SKYRIZI.**

- SKYRIZI is for single use in one patient only. Discard any residue.
- You should receive training on how to injection SKYRIZI before giving an injection. Talk to your doctor, pharmacist or nurse if you need help.
- Mark the dates on your calendar so you know when to inject SKYRIZI.
- Keep SKYRIZI in the original carton to protect the medicine from light until it is time to use it.
- Take the carton out of the refrigerator and leave it at room temperature, out of direct sunlight, for 30 to 90 minutes before injecting, without removing the pre-filled pen from the carton.
- **Do not inject if the liquid in the inspection window is cloudy or contains flakes or large particles. The liquid should look clear to yellow and may contain tiny white or clear particles.**
- **Do not use if expiration date (EXP) has passed.**
- **Do not use if liquid has been frozen (even if thawed).**
- **Do not shake the pen.**
- **Do not use if pen has been dropped or damaged.**
- **Do not use if the carton perforations are broken. Return this medicine to the pharmacy.**
- **Do not remove the dark grey cap until just before the injection.**

Follow the steps below each time you use SKYRIZI.

### Prepare SKYRIZI injection



Take the carton out of the refrigerator and leave it at room temperature, out of direct sunlight, for 30 to 90 minutes before injecting.

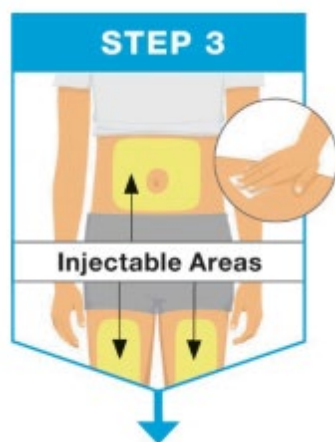
- **Do not remove the pen from the carton while allowing SKYRIZI to reach room temperature.**
- **Do not warm SKYRIZI in any other way. For example, do not warm it in a microwave or in hot water.**
- **Do not use the pen if liquid has been frozen, even if it has been thawed.**



Gather the supplies for the injection and place the following on a clean, flat surface:

- 1 pre-filled pen (provided).
- 1 alcohol pad (not provided).
- 1 cotton ball or gauze pad (not provided).
- Sharps disposal container (not provided).

Wash and dry your hands.

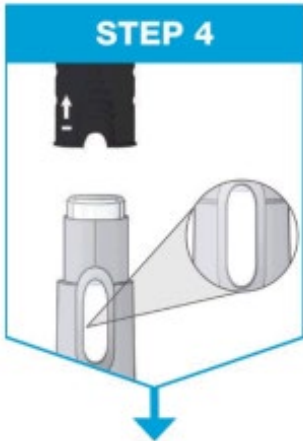
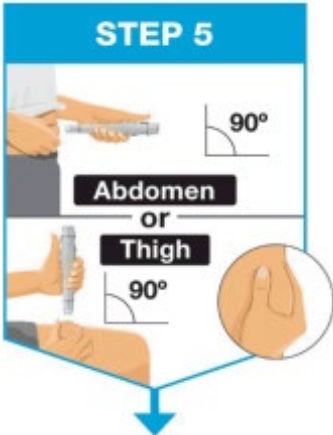
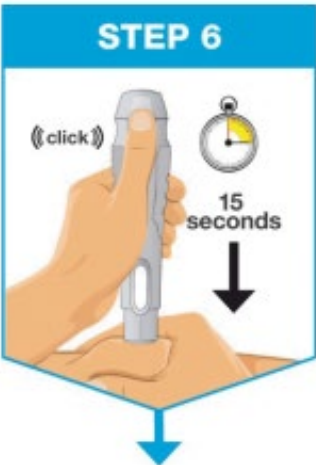


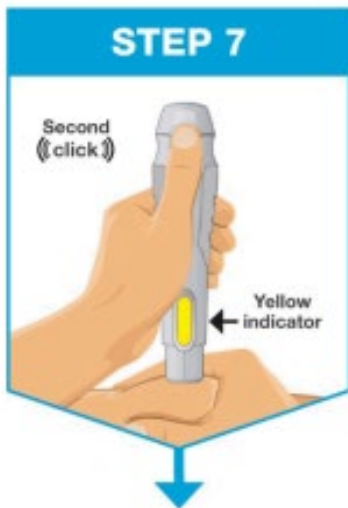
Choose from 3 areas to inject:

- Front of left thigh.
- Front of right thigh.
- Belly (abdomen) at least 5 cm from the belly button (navel).

Before the injection, wipe where you will inject in a circular motion with an alcohol pad.

- **Do not touch or blow on the injection site after it is cleaned. Allow the skin to dry before injecting.**
- **Do not inject through clothes.**
- **Do not inject into skin that is sore, bruised, red, hard, scarred, or has stretch marks.**

	<ul style="list-style-type: none"> <li>• <b>Do not inject into areas affected by psoriasis.</b></li> </ul>
	<p>Hold the pen with the dark grey cap pointing up, as shown.</p> <ul style="list-style-type: none"> <li>• Pull the dark grey cap straight off.</li> <li>• Throw the dark grey cap away.</li> </ul> <p>Check the liquid through the inspection window.</p> <ul style="list-style-type: none"> <li>• It is normal to see bubbles in the liquid.</li> <li>• The liquid should look clear to yellow and may contain tiny white or clear particles.</li> <li>• <b>Do not use if the liquid is cloudy or contains flakes or large particles.</b></li> </ul>
<p><b>Give SKYRIZI injection</b></p> 	<p>Hold the pen with your fingers on the grey hand grips.</p> <p>Turn the pen so that the white needle sleeve points toward the injection site and you can see the green activator button.</p> <p>Gently squeeze the skin at your injection site to make a raised area and hold it firmly.</p> <p>Place the white needle sleeve straight (90 degree angle) against the raised injection site.</p>
	<p>Hold the pen so that you can see the green activator button and inspection window.</p> <p>Push and keep pressing the pen down against the raised injection site.</p> <ul style="list-style-type: none"> <li>• The pen will activate only if the white needle sleeve is pressed down against the injection site before pressing the green activator button.</li> </ul> <p>Press the green activator button and hold the pen for 15 seconds.</p> <ul style="list-style-type: none"> <li>• A loud "click" means the start of the injection.</li> </ul>



Keep pressing the pen down against the injection site.

The injection is complete when:

- The pen has made a second "click" or
- The yellow indicator has filled the inspection window.

This takes up to 15 seconds.

#### After SKYRIZI injection



When the injection is complete, slowly pull the pen out from the skin.

The white needle sleeve will cover the needle tip and make another "click".

After completing the injection, place a cotton ball or gauze pad on the skin at the injection site.

- **Do not rub the injection site.**
- Slight bleeding at the injection site is normal.



Throw away the used pen in a sharps disposal container right away after use.

- **Do not throw away the used pen in the household waste.**
- Your doctor, pharmacist or nurse will tell you how to return the full sharps disposal container.