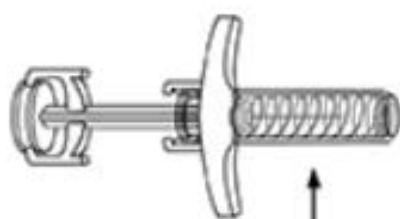
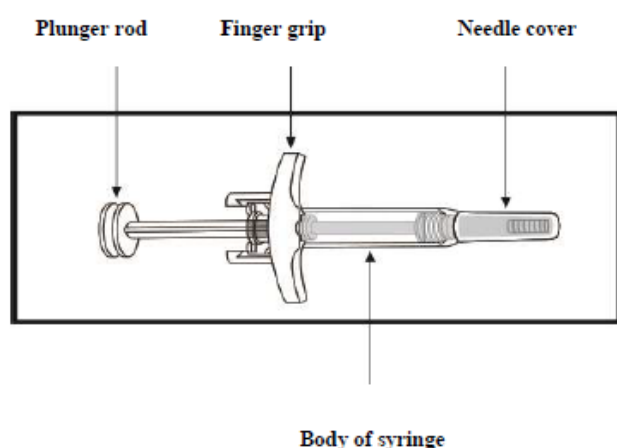
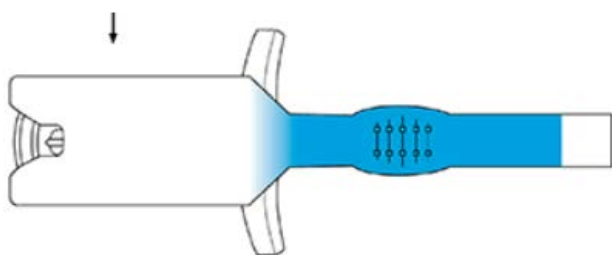


Instructions for Use

SKYRIZI Pre-filled Syringe 150 mg/mL

Please read complete instructions before using SKYRIZI.

Cardboard sleeve covering pre-filled syringe before use



Needle Guard covering needle after use

Important information to know before you inject SKYRIZI.

- SKYRIZI is for single use in one patient only. Discard any residue.
- Receive training on how to inject SKYRIZI before giving an injection. Talk to your doctor, pharmacist or nurse if you need help.
- Mark the dates on your calendar so you know when to next use SKYRIZI.
- Keep SKYRIZI in the original carton to protect from light until it is time to use it.
- **Do not inject if the liquid is cloudy or contains flakes or large particles. The liquid should look clear to yellow and may contain tiny white or clear particles.**
- **Do not use if expiration date (EXP) has passed.**
- **Do not use if liquid has been frozen (even if thawed).**
- **Do not shake the syringe.**
- **Do not use if syringe has been dropped or damaged.**
- **Do not use if the carton perforations are broken. Return this medicine to the pharmacy.**
- **Do not remove the needle cover until right before giving the injection.**

For a more comfortable injection: Take the carton out of the refrigerator and leave it at room temperature, out of direct sunlight, for 15 to 30 minutes before injecting.

- **Do not remove the syringe from the carton until ready to inject.**
- **Do not warm SKYRIZI in any other way. For example, do not warm it in the microwave or in hot water.**

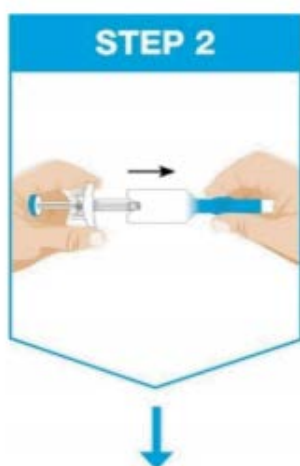
Follow the steps below each time you use SKYRIZI.



Gather the supplies for the injection and place the following on a clean, flat surface:

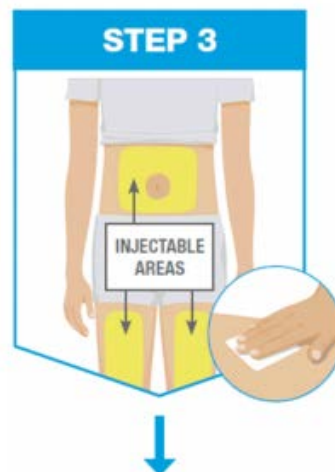
- 1 pre-filled syringe (provided)
- 1 alcohol pad (not provided)
- 1 cotton ball or gauze pad (not provided)
- Sharps disposal container (not provided)

Wash and dry your hands.



Remove pre-filled syringe from cardboard sleeve by holding the finger grip.

- **Do not hold or pull plunger rod when removing the pre-filled syringe from the sleeve.**



Choose from these 3 areas to inject:

- **Front of left thigh**
- **Front of right thigh**
- **Belly (abdomen) at least 5 cm from the belly button (navel)**

Before the injection, wipe the injection site in a circular motion with an alcohol pad.

- **Do not touch or blow on the injection site after it is cleaned. Allow the skin to dry before injecting.**
- **Do not inject through clothes.**
- **Do not inject into skin that is sore, bruised, red, hard, scarred, or has stretch marks.**
- **Do not inject into areas affected by psoriasis.**



Hold the syringe with covered needle pointing down, as shown.

Check the liquid in the syringe.

- It is normal to see bubbles in the window.
- The liquid should look clear to yellow and may contain tiny white or clear particles.
- **Do not use if liquid is cloudy or contains flakes or large particles.**



Removing the needle cover:

- Hold the syringe in one hand between the finger grip and needle cover.
- With the other hand, gently pull the needle cover straight off.
- **Do not hold or pull the plunger rod when removing the needle cover.**
- You may see a drop of liquid at the end of the needle. This is normal.
- Throw away the needle cover.
- **Do not touch the needle with your fingers or let the needle touch anything.**

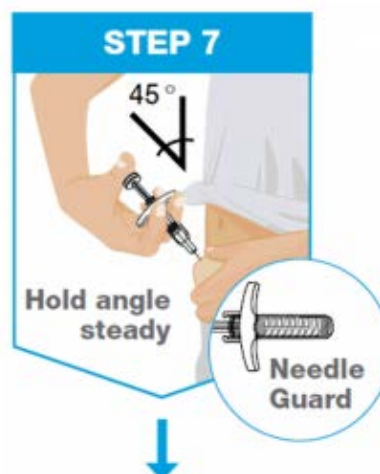


Hold the body of the syringe in one hand between the thumb and index finger, like you would a pencil.

Gently pinch the area of cleaned skin with your other hand and hold it firmly.

Insert the needle all the way into the skin at about a 45-degree angle using a quick, short movement.

Keep the syringe steady at the same angle.



Slowly push the plunger rod all the way in until all the liquid is injected and the syringe is empty.

Pull the needle out of the skin while keeping the syringe at the same angle.

Slowly take your thumb off the plunger rod. The needle will then be covered by the needle guard.

- The needle guard will not activate unless all the liquid is injected.
- Speak to your doctor, pharmacist or nurse if you think you have not given a full dose.

Press a cotton ball or gauze pad where you have injected and hold for 10 seconds.

Do not rub the skin where you have injected. You may have slight bleeding from where you injected. This is normal.



Throw away the used syringe in a sharps disposal container right away after use.

- **Do not throw away the used syringe in the household waste.**
- Your doctor, pharmacist or nurse will tell you how to return the full sharps disposal container.

Version 1